

BR-P626-00EN

# FM600

FM600  
Electro - Pneumatic  
Positioner



# FLOWMAXI

## FM600 – Electro - Pneumatic Positioner



The Flowmaxi FM600 is an electropneumatic positioner that operates with a 4–20 mA analog control signal, providing high positioning accuracy for MOX series control valves. Its durable structure for harsh field conditions increases system reliability.

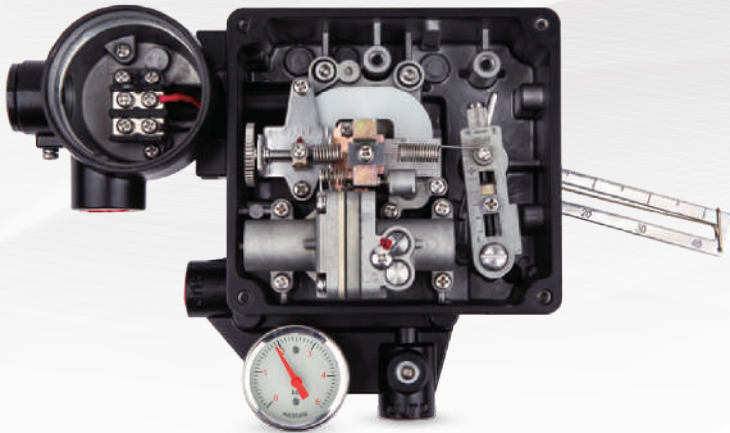
- Linear and fast positioning with 4–20 mA input signal
- Air supply: 1.4–7 bar / Compatible with double-acting and spring-return types
- Auto/Manual operating mode
- Compact structure, IP66 protection class
- Fast commissioning and low hysteresis value
- Connection interface compatible with all standard pneumatic actuators

- Used in various control valve systems
- Fast response time, durability, and excellent stability
- Simple zero and span adjustment
- IP66 Protection Class
- Equipped with bypass valve (A/M switch)
- Equipped with bypass valve (A/M switch)
- Air connection parts are designed to be removable and replaceable
- Easily perform PT/NPT threading in the field

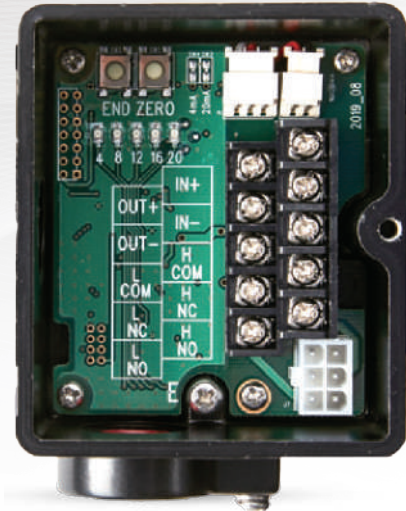
## Specifications

- Fast response time and excellent stability
- Easy zero and span adjustment
- Enclosure with IP66 protection class
- High vibration resistance
- Integrated by-pass valve (A/M switch – Auto/Manual transition)
- The air connection part is detachable and can be easily converted to PT/NPT thread types in the field
- Integrated Flameproof and Intrinsically Safe protection (ATEX & IECEx versions)

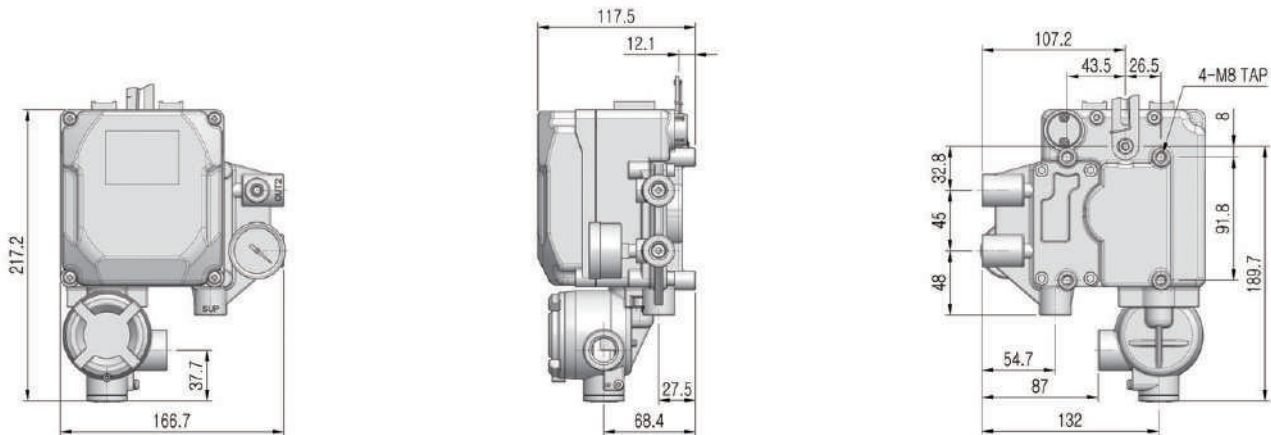
## Internal Structure



## Position Transmitter PCB Board



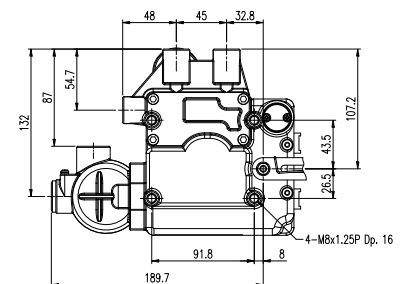
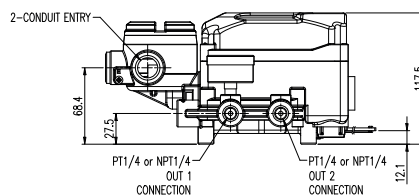
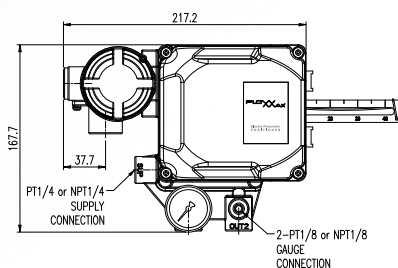
## Dimensions



Flowmaxi FM600 is a reliable solution that provides precise and stable positioning in control valves with its compact design and robust electropneumatic structure. By linearly and rapidly converting the 4–20 mA analog signal into movement, it offers stable process control with a low hysteresis value. It works in full compatibility with double-acting and spring-return actuators within the 1.4–7 bar air supply range. While providing long-lasting performance in harsh field conditions thanks to its durable body with IP66 protection class, it offers operational flexibility with Auto/Manual operating mode and an integrated bypass (A/M) switch. Installation and maintenance procedures can be carried out quickly and practically due to its modular structure, removable air connection part, and field-applicable PT/NPT thread options.

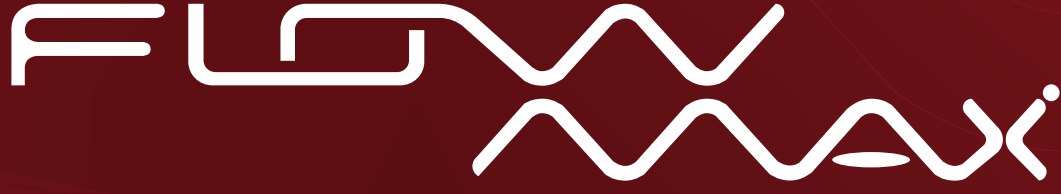
## Technical Specifications

Model		FM600
Input Signal		4~20mA DC
Impedance		250 ±15Ω
Supply Pressure		0.14~0.7 MPa
Stroke		10~150 mm
Air Connection		PT1/4, NPT1/4, G1/4
Manometer Connection		PT1/8, NPT1/8
Cable Entry Connection		G(PF)1/2, NPT1/2, M20
Explosion Protection Type		Ex db mb IIC T6/T5 Gb Ex ia IIC T6/T5 Gb
Intrinsically Safe Parameters		Ui=28V, li=101mA, Pi=707mW
Protection Class		IP66 (EN60529)
Ambient Temp.	Operating Temp.	-20°C ~ 70°C (Standard type)
	Explosion Proof	-40°C ~ 60°C (T5) / -40°C ~ 40°C (T6)
Linearity		±1.0% F.S.      ±2.0% F.S.
Sensitivity		±0.2% F.S.      ±0.5% F.S.
Hysteresis		±1.0% F.S.
Repeatability		±0.5% F.S.
Air Consumption		Below 2.5 LPM (Sup=0.14MPa)
Flow Capacity		Over 80 LPM (Sup=0.14MPa)
Material		Die-cast Aluminum
Weight		2.8 kg



## Product Coding Structure

Model		FM600	L					
Acting Type	Lineer Tip		L					
Explosion Protection Type	Not Explosion Proof			N				
	Ex dmb IIB T5/T6			B				
	Ex dmb IIC T5/T6			C				
	Ex ia IIC T5/T6			A				
	ATEX & IECEx Version Ex db mb IIB/IIC T5/T6 Gb Ex ia IIC T5/T6 Gb			X				
Connection Type	<u>Cable Entry</u>	<u>Air Connection</u>						
	G1/2	PT1/4		1				
	G1/2	NPT1/4		2				
	NPT1/2	NPT1/4		3				
	M20	NPT1/4		4				
	M20	G1/4		5				
Stroke Range	10 ~ 40 mm				1			
	40 ~ 70 mm				2			
	70 ~ 100 mm				3			
	100 ~ 150 mm				4			
Ambient Temp	-20°C ~ 70°C					S		
	20°C ~ 120°C					H		
	-40°C ~ 70°C					L		
	-60°C ~ 70°C (for EAC)					U		
Option	None - Standard type							0
	4~20mA Position Transmitter - RA type							1
	4~20mA Position Transmitter - DA type							2



Maximum Reliability in Flow Control!

Fevzi Çakmak Mah. 10576. Sk. NO:13/M Karatay/**KONYA/TÜRKİYE**

info@flowmaxi.com

+90 (850) 255 06 67



[www.flowmaxi.com.tr](http://www.flowmaxi.com.tr)